

THE HANNA



The Hanna

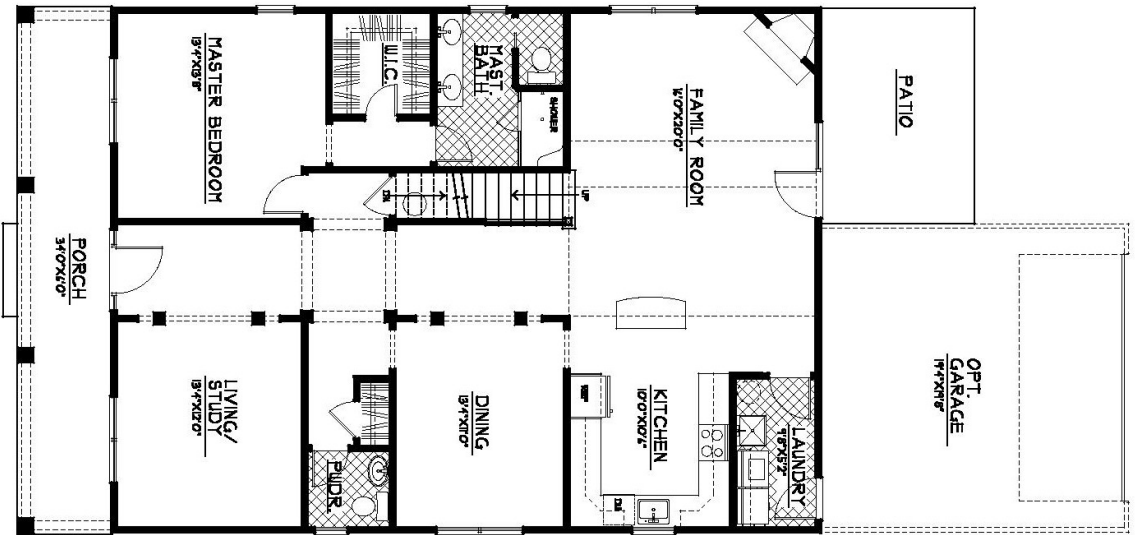
Mayberry Hills, Smith Mountain Lake's only Traditional Neighborhood Development, offers a variety of classic Single-family homes. Each home is within easy walking distance of all shopping and dining in Downtown Moneta. With Smith Mountain Lake just a few minutes away, Mayberry Hills is the perfect place to call home.

- *One-and-half story*
- *Open floor plan*
- *Covered front porch*
- *Three bedrooms*
- *Two-and-half bathrooms*
- *Fireplace in Great Room*



For more information, contact Lyons Team Realtors at 1800-920-0801 or visit our website at www.DowntownMoneta.com

THE HANNA

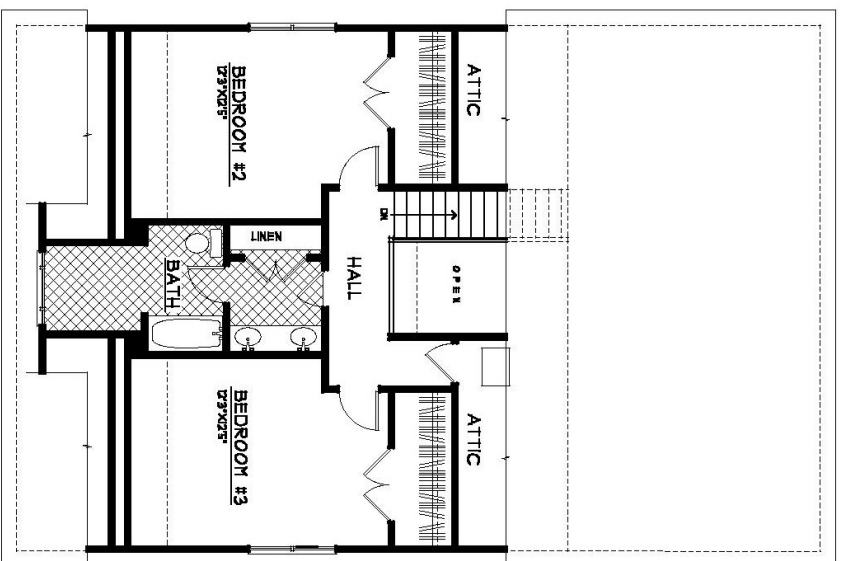


FIRST FLOOR PLAN



REAL ESTATE SERVICES

Floor plans and renderings are artist conceptions that may vary in detail from the actual homes. All room dimensions are approximate. We reserve the right to alter home specifications without notice or obligation.



SECOND FLOOR PLAN



MAYBERRY HILLS
Donatona Morceta



RE/MAX